

CHICAGO

ILLUMINATION AWARDS

SEPTEMBER 26, 2024



ARCHITECTURAL LIGHTING | ELEMENT 3"
SQUARE BEVELED TRIM
FLANGELESS

EXPLORE | VISUALCOMFORT.COM

VISUAL COMFORT & CO.

Welcome

IES ILLUMINATION AWARDS SEPTEMBER 26, 2024

Awards Ceremony and Dinner 5:00-10:00pm

Join our MC, Sara Schonour, as we recognize outstanding Chicago projects at the Illumination Awards Ceremony.

Greetings from the President/MC
Presidential Address
Dinner/Intermission
Project Awards
Sponsorship and Membership Recognition
EP Luminaire Competition
Company Shorts Videos

MASTER OF CEREMONIES



Sara Schonour (Pronouns She/Her) is honored to be back to host IES Chicago's IA awards for her second year in a row! Hailing from the Boston Section where she'll serve as President next year, you might also recognize Sara from WILD (Women in Lighting + Design) where she serves as the Mentorship Committee co-chair, NACLIQ (the North American Coalition of Lighting Industry Queers) where she serves as Executive Co-Chair, or from other committees and advocacy groups within the industry. She spent most of her career leading the lighting studio at world-renowned architecture firm CannonDesign, then joined the team at Lytei before starting her consulting firm, Luxsi (and her side hustle, Space Poppers!). Now, she mixes illumination, engineering, education, entertainment, and entrepreneurship fluidly in the industries she enjoys most. Sara speaks regularly in classrooms, on podcasts, and at conferences on various topics surrounding light and life. You can see Sara in action representing the world of lighting and engineering on the hit Netflix show, *Baking Impossible!* Sara is thrilled to be part of this year's Illumination Awards celebration, and sends hearty congratulations to all of tonight's honorees!

Rachael Stoner

LETTER FROM THE PRESIDENT

Good Evening,

In the lighting pollution Chicagoland area, where shadows play on the walls like an old black and white film, there lies an art form that often goes unnoticed. It's the art of lighting design, a craft that brings the night to life and gives the concrete jungle a soul. Tonight, we tip our hats to the IES Award recipients, those maestros of light who orchestrate the interplay of luminescence and darkness. They are the unsung heroes who transform ordinary spaces into visual symphonies, who push the boundaries of creativity to illuminate our world in ways we never thought possible. As we gather under the glow of their achievements, let's not forget the power of a well-placed beam, the romance of a softly lit alley, or the drama of a starkly shadowed facade. These artists of the ephemeral remind us that in the right light, at the right time, everything is extraordinary.



In the dimly lit corridors of the IES headquarters, a group of dedicated souls gather, their faces illuminated by the soft glow of the very technology they champion. They are the unsung heroes of light, the guardians of lumens and lux, orchestrating symphonies of brightness and shadow. The Board members, a cadre of visionaries, plot courses through the nebulous realms of governance and education, their decisions casting long shadows that shape the future of illumination.

Emerging Professionals, like moths to a flame, are drawn to the beacon of the IES, eager to spread their wings in the incandescent world of lighting design. They are the new blood, the fresh eyes that see beyond the recommended levels of the Lighting Library, envisioning a world where light touches every life, enhancing, enlivening, enlightening.

And then there are the Sponsors, those titans of industry whose generosity fuels the grand endeavors of the IES. Their support is the lifeblood that allows the organization to thrive, to host events that are nothing short of luminous gatherings, where ideas spark and connections are forged in the fire of shared passion.

Together, they stand at the precipice of innovation, peering into the abyss of the unknown, ready to leap into the future where light is not just a utility, but a universal right, a beacon of hope in the ever-encroaching darkness.

Sincerely,

Rachael Stoner, IES, Associate IALD

IES CHICAGO SECTION BOARD OF MANAGERS

PRESIDENT

Rachael Stoner - EXP

VICE PRESIDENT

Juliana Ejsmont - Leviton

TREASURER

Oliver Maudlin - Acuity

SECRETARY

Jaslyn Otero - Aurora Lighting Design

ILLUMINATION AWARDS COMMITTEE

Juliana Ejsmont - Leviton

Kiersten Hoiland - Hoiland Studios

John Majca - Visual Comfort & Co.

Nick Maurer - Primera Engineers

Erin L. McLellan-Dawe - Legrand (Awards Chair)

Jaslyn Otero - Aurora Lighting Design

Rachael Stoner - EXP

BOARD OF MANAGERS

Peri Peng - Gensler (Website Chair)

Brian Maite - Leviton

Nick Maurer - Primera Engineers

Ally Mazurski - A+M

Evelyn McGowan - Jacobs (Membership Chair)

Erin L. McLellan-Dawe - Legrand (Awards Chair)

Ashley Mikels - Interior Architects (Education Chair)

John Rapacz - Chicago Lightworks (Golf Chair)

Brandon Stanley - SmithGroup (Sponsorship Chair)

Melisa Russo - Pivotal (Emerging Professionals Chair)

ASSOCIATE MEMBERS

Carla Bukalski - Focal Point

John Majca - Visual Comfort & Co.

PAST PRESIDENTS

2020-2022 Brandon Stanley

2012-2014 Ashley Wickramaratne

2004-2006 Kim Eber

2018-2020 Erin L. McLellan-Dawe

2010-2012 Boyd Corbett

2002-2004 Bridget Cross

2016-2018 Emily O'Brien

2008-2010 Avraham Mor

2001-2002 Chris Dolan

2014-2016 Miory Kightlinger

2006-2008 Giulio Pedota

1999-2001 Carla Bukalski

Leadership

CONTACT PRESIDENT@IESCHICAGO.ORG TO JOIN THE BOM

AWARD OF MERIT

Western Michigan University, Student Center and Dining Facility

Upon entering the building, one is greeted by the custom offset linear pendant running in a loop in the corridors. It is wayfinding at its best with 1,320 continuous linear feet, which is always visible and connects you back to the main circulation.

Central to the building is the “cedar heart”, a large daylit atrium whose name pays homage to the campus’ native American roots. The sitting circle is a welcoming, safe place for dialogue and creates a culture of civility, enriching the student experience. Suspended multi-head gimbal track heads allow for more intimate environments, while in the more dynamic game areas, louder graphical lighting energizes the space.

Color temperatures vary throughout. Warmer tones in lounge areas invoke relaxation, and cooler, brighter lights in study zones aid in concentration and minimize eye strain. Thematic decorative lighting in each retail food venue sets each apart. While establishing an atmosphere, decorative fixtures also provide usable light on serverly counters.

This lighting design is a testament to innovative and sustainable design (pursing LEED silver certification), creating a harmonious and inspiring environment that complements the environmental values of the university and its communities.



Warm lighting complements and enhances the prominent architectural features. Light bounces off the floor onto the canopy above, drawing visitors into the main entry. Exterior lighting, mindful of reducing light pollution, ensures a safe and inviting outdoor environment. Strategic accents delicately highlight structural elements adding depth and visual interest.



Each distinct space is characterized by a unique lighting approach, while a serpentine curvable linear pendant winds through corridors servicing as a wayfinding queue.

Energy-efficient LED fixtures, chosen for their low energy consumption and long lifespan, paired with robust control systems, provide maximum energy savings for the client.



A large skylight above the geometric grand stair seamlessly integrates natural with artificial light. Warm CCT, small-aperture downlights recessed into warm-wood soffits supplement natural light.

DESIGN TEAM

Raisa Shigol, LC, CannonDesign
Thomas Hanley, AIA, CannonDesign
Brett Lawrence, CannonDesign
Darren Poon, AIA, CannonDesign



AWARD OF MERIT

Confidential Client Stair

An open, 4-story interconnecting stair is the primary feature of the new office. A series of vertical metal “rods” span the full height of the stair and are encased in dark-colored tubes of varying lengths to mimic sloping mountain ranges.

Lighting plays an integral role in accentuating this feature over the course of the day, while simultaneously lighting the stairs. Linear “grazers” integrated behind fascias at the top and bottom of the stair wash the metal rods. Half-way up the stair, back-to-back “grazers” concealed in an enclosure light up and down the rods to re-energize the illuminated sculpture. The fixtures deliver 1,600+ lumens per foot (to compete with the abundant daylight), a 10x10-degree distribution, and include integral louvers to minimize glare. LEDs are tunable white and programmed to change color temperature and intensity over the course of the day to mimic the changing daylight.

In addition to lighting the metal rod feature, the downlight “grazers” cast light onto the stair treads, while the uplight “grazers” illuminate the underside of the undulating, wood stair wrap. No additional lighting was required to provide sufficient light levels for navigating the stair. The lighting solution is both beautiful and functional.



An open, 4-story stair is the primary feature of this new office. Vertical “rods” that mimic mountain ranges are illuminated by carefully-integrated linear “grazers”.



Grazers are concealed behind architectural fascias that are in front of the vertical rods. Integration, output, distribution, glare control, and color temperature were key considerations.

DESIGN TEAM

Emily Klingensmith, IALD, LC, LEED AP
Schuler Shook

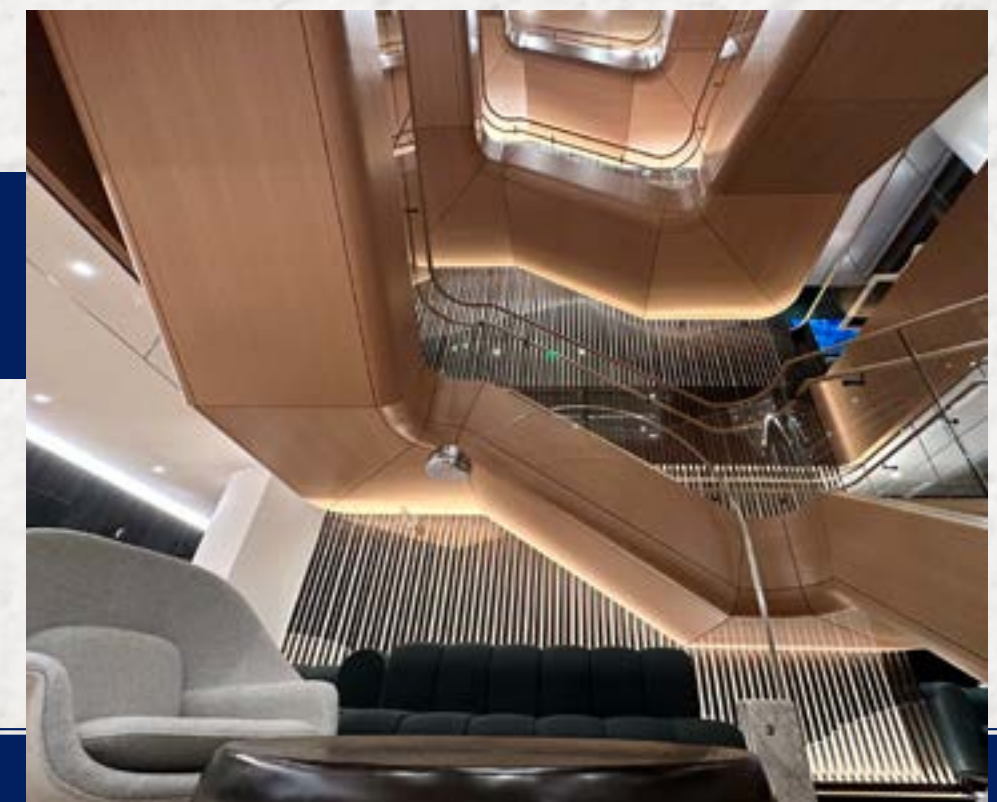
John Jacobsen, Associate IALD, IES, LC
Schuler Shook

Travis Shupe, Associate IALD
Schuler Shook

Samantha Komber, LC
Schuler Shook

Sanjana Adavi
Schuler Shook

Downlight “grazers” not only light the metal rods, but they also cast light onto the stair treads. The lighting solution is striking, yet functional.



Congratulations

ANNUAL AWARDS

IES Chicago thanks the generous Annual Sponsors who make all of our courses and events possible.

CHICAGO SECTION SERVICE AWARD

The IES Section Service Award is presented by a Section to a member in recognition of outstanding service to the Section, principally of a non-technical nature, that has significantly furthered the purpose of the Society continuously over 5 years in various programs and activities.

Past Recipients

Abigail Sorensen 2022
Justin Castellano 2022
Alexandria Mazurski 2021
Ashley Mikels 2021
Brandon Stanley 2021
Erin McLellan-Dawe 2020
Emily O'Brien 2020
Grant Kightlinger 2020
Miory Kanashiro-Kightlinger 2018
Carla Bukalski 2003
Peter Hugh 2003
Evelyn Alford-McGowan 2001
Wayne Fresen 2001
Rick Kellen 2001
Bernard Boylan 1981

DISTINGUISHED SERVICE AWARD

The Distinguished Service Award shall be presented in recognition of continuous dedication service to the Society, principally of a non-technical nature, having significantly furthered the purpose for which the Society was founded, and continued over several years in various programs and activities at, typically, regional and international levels.

Past Recipients

Peter Hugh 2023
Leslie M. North 2020
Carla Bukalski 2018

SECTION MERITORIOUS AWARD

The Section Meritorious Service Award is a significant and meaningful award for individuals having given exceptional service over a long period of time; greater than 15 years.

Past Recipients

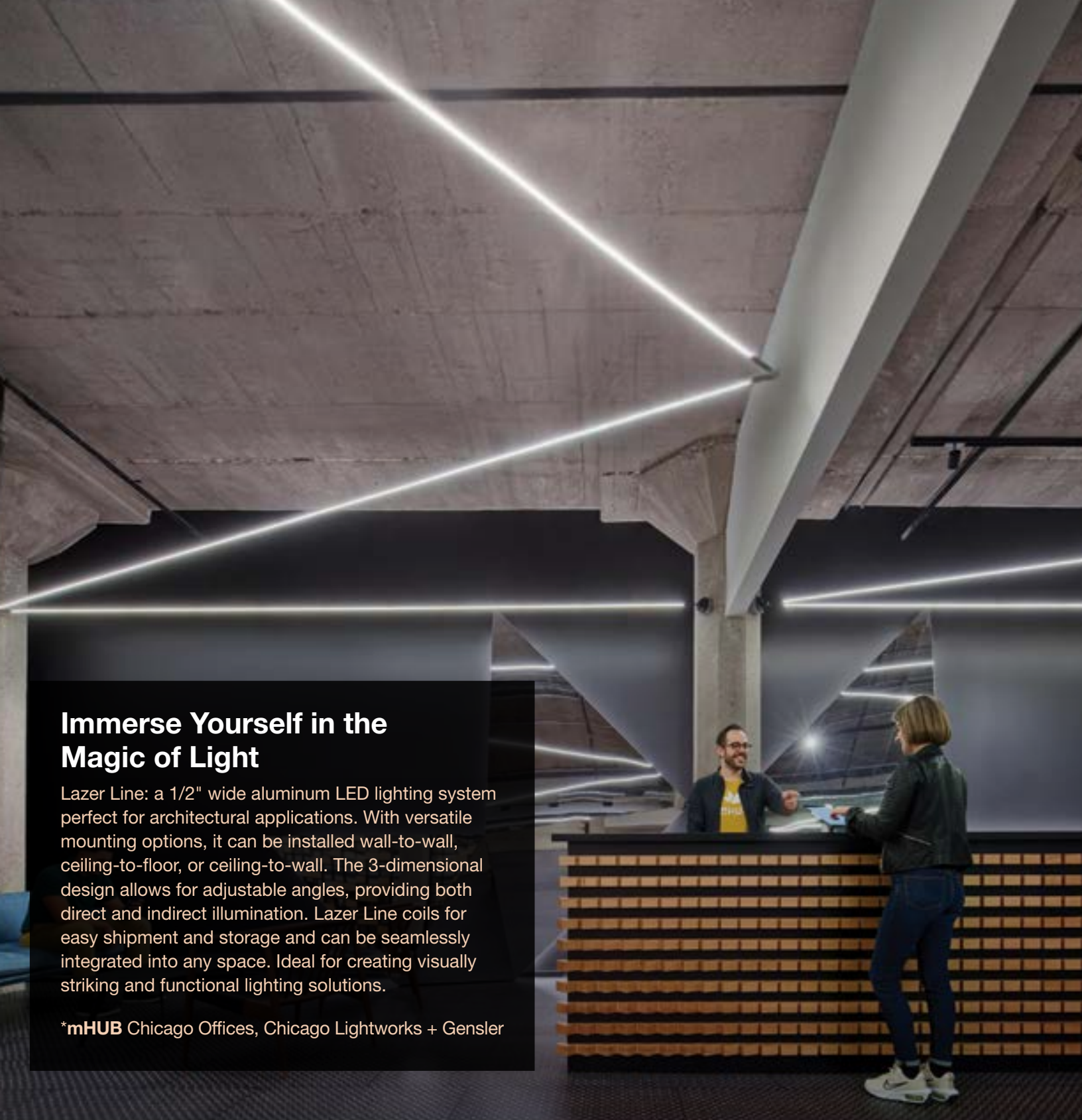
Evelyn McGowan 2020
Vern Brooks 1982
Bernard Boylan 1981
Erwin Veit 1980



Coronet
Architectural Lighting

Quality light, striking
design, acoustic control.

[Explore More](#)



Immerse Yourself in the Magic of Light

Lazer Line: a 1/2" wide aluminum LED lighting system perfect for architectural applications. With versatile mounting options, it can be installed wall-to-wall, ceiling-to-floor, or ceiling-to-wall. The 3-dimensional design allows for adjustable angles, providing both direct and indirect illumination. Lazer Line coils for easy shipment and storage and can be seamlessly integrated into any space. Ideal for creating visually striking and functional lighting solutions.

*mHUB Chicago Offices, Chicago Lightworks + Gensler

Thank You

2024 ANNUAL SPONSORS

IES Chicago thanks the generous Annual Sponsors who make all of our courses and events possible.

LUMINARY



VISIONARY



CHAMPION



LEADER



PURE SMART
by PureEdge Lighting



Contact your local PureEdge Representative or visit pureedgelighting.com

AWARD OF MERIT

Museum Kitchen at the Museum of Science and Industry

This project replaces a 1990's-era renovation with incandescent light sources and dated finishes. The new program consists of a central food-hall with three unique dining rooms. This design pays homage to the cafeteria's 1930s origins, using classic but modern art-deco design elements.

Consistent illuminance levels and lighting strategies reinforce the connection between all four spaces. These strategies include maintaining a uniform layer of architecturally integrated general lighting, highlighting key architectural elements and transaction points, illuminating vertical surfaces, and using a cohesive family of decorative lighting fixtures.

A wall of curiosity-cabinets brings museum displays into north dining. Integrated linear LEDs are detailed at both front and back of the shelf to illuminate artifacts. In overflow dining, linear direct/indirect pendants are integrated throughout undulating acoustic blades providing both general light and visual lift to this lower ceiling area.

As an active cafeteria, code requirements needed to be met without compromising the project's cohesiveness. Architectural bulkheads conceal a grid ceiling with foodservice-rated recessed lensed downlights providing safe, bright illuminance to prep surfaces.

All lighting in the space is dimmable. Dimmed presets are programmed to set and layer light levels. A new centralized architectural lighting control system allows for a scheduled timeclock sequence of operations.



New LED downlights increase general light levels at entrance and welcome visitors into the Museum Kitchen. When open, gates are highlighted from cove-mounted linear LEDs.



DESIGN TEAM

Maureen Mahr IALD, MIES, LC, LEED AP
Maureen Mahr Lighting Design
Sana Ahmad, Aria Group Architects
Guillermo G. Gomez, Aria Group Architects
Neal Thompson AIA, Aria Group Architects
Ryan Pubentz, Aria Group Architects



Glowing pendants provide general illumination to the south dining rooms, supplemented by integrated downlights above booths and cylinder downlights concealed above acoustic panels.

Illuminated "Checkout" signage directs guests to transaction counters highlighted by simple Unistrut-mounted cylinder adjustable downlights. Beverage station beyond is similarly illuminated by Unistrut-mounted cylinder wallwashers.



AWARD OF MERIT

Chicago O'Hare International Airport Terminal 5 Expansion

Bathed in natural light, the urban plaza-inspired terminal is the main feature space. The lighting design aims to provide a human-centric experience in a visually busy airport, with a design approach that is orderly and minimalistic, displaying 3,260 downlights, and an array of 301 illuminated "eyelid-shaped" domes. Domes are illuminated with a single, 2-foot asymmetrical uplight with 3000K CCT. To conceal fixtures from view, several mockups were conducted in-situ until reaching optimal results.

Upon descending the jet's bridge, a high emphasis is placed on simplicity, visual clarity, and low-glare. To mimic daylight and activate the passenger's alertness as they walk towards the security checkpoint, a luminous ceiling and wall is introduced.

The baggage claim has a low ceiling with recessed linear fixtures providing general lighting, downlights accentuating dark floors, and illuminated column covers mimicking daylight and harmonizing the space. 35-fc average is provided as task lighting at the conveyor belts. The project is on track to achieve LEED Silver certification.

DESIGN TEAM

Giulio Pedota, IALD, IES, LC, LEED AP, Schuler Shook

Brian Wiley, LC, Assoc. IALD
(formerly of Schuler Shook)

Samantha Komber, LC, Schuler Shook

Peter Ruggiero, AIA, HOK

Dallas Felder, HOK

David Steele, Muller2

Fixtures integrated with the domes are carefully concealed from travelers' vantage points. In-situ mockups were conducted to conceal the fixtures with a small-profile cove lip.



The urban plaza-inspired terminal, exhibiting its twisting columns and "eyelid-shaped" domes. Uniformly illuminated domes are fitted with a single, 2-foot asymmetrical uplight with 3000K CCT.



An illuminated ceiling and wall mimics daylight to activate travelers' alertness and provide visual clarity for proper wayfinding as travelers approach the next security checkpoint.



Recognition

MEMBERSHIP MILESTONES

50 YEARS Mitchell Kohn	40 YEARS Craig Bailey	45 YEARS Kayla Burke	35 YEARS Peter Hugh Ed Morel
25 YEARS Steve Barnard	20 YEARS Colette Fleming Miory Kightlinger Maureen Mahr	15 YEARS Carl Bloomfield Terrance Dee Mohammed Elsholi John Meyer	5 YEARS Matt Durning Brian Finn Kate Griebler Valeria Holland Jaslyn Otero Giulio Pedota John Rapacz Mike Shea Andrew Shebath Ann Youngberg
10 YEARS Lori Smith Brandon Stanley Erin Weber			

Community

UPCOMING EVENTS

- November 7, 2024** - Lighten Up
- November 14, 2024** - Discussion panel on Software for Lighting Designers
- December 11, 2024** - Energy Code / Code Updates (lunch event)
- January 9, 2025** - Post-Holiday Party
- January, 2025 (Date TBD)** - RP-46: Recommended Practice Supporting the Physiological and Behavioral Effects of Lighting Interior Daytime Environments
- June 25, 2025** - Golf Outing at Cogg Hill

** More dates and events to be announced

Education

EMERGING PROFESSIONALS

Encourage your younger team members to join the IES Chicago Section Emerging Professionals Group - low annual membership fee that includes all the benefits of membership and more! Contact ep@ieschicago.org for more information.

Awards Cover

Seventh annual cover contest in 2025, open to all members of the community to design the Illumination Awards cover. Details of the competition are released by January 15; participants must submit to awards committee by April 1st each year to awards@ieschicago.org.

Luminaire Competition

Each year emerging professionals are provided a donated source and a theme to use their creativity to develop their own luminaire. Each luminaire is showcased at the awards event where attendees can review and vote for their favorite. Financial prizes are awarded the night of the awards in celebration of these young creatives.

Scholarship

The IES Chicago Section looks forward to continuing the scholarship to those students who are in the creative field with a focus on lighting. Details to come in January 2025.

CONTINUING EDUCATION

Whether new to lighting or just looking to gain extra experience, join these two exciting courses for continued education. Please contact education@ieschicago.org for more information!

Fundamentals of Lighting

New to lighting? The IES Chicago Section has you covered through our Fundamentals of Lighting curriculum. The 10-session FOL offers a fantastic opportunity to hone your lighting knowledge by learning from local industry leaders. Weekly, we will explore: a history of lighting, perception of light, luminaire design, modern control techniques, photometry & metrics, codes & standards, lighting design processes and lighting indoor & outdoor spaces. Do you want to learn more about the specifics? Please contact education@ieschicago.org for more information!

Organizational Team Training

The IES Chicago Section is also proud to offer organizational training and coursework to provide a tailored educational experience for your team. While this won't grant a CEU, it will give your team the exact training you seek. Please reach out to education@ieschicago.org to discuss this option in detail.



CHICAGO SECTION

Illuminating
ENGINEERING SOCIETY

AWARD OF MERIT

The College of Lake County – College Experience Redefined

While striving for LEED Gold Certification, the project faced challenges. However, these challenges were resolved through cross-discipline collaboration, thoughtful selection of high efficacy light fixtures, and comprehensive controls application, all resulting in solutions that align with the overall design vision.

Discrete illumination emphasizes the architectural features, with the objective to imitate the soothing sparkling lake waves; thus, creating a quintessence for library focus. Site mock-ups combined with detailed AGI modeling resulted in the glare-free, uniform, six-story continuous stair illumination.

To achieve the project's goals, various lighting and lighting controls solutions are implemented, focusing on improving end-user's comfort, on sustainability and innovation, as well as enhancing space aesthetics, minimizing energy consumption, and prioritizing glare control. Energy modeling and daylight studies were conducted to strike the proper balance between fixture dimming, electrochromic glazing, and HVAC energy consumption. That has been achieved through a uniquely specialized controls system algorithm covering a wide spectrum of integrated systems, such as BAS, AV, partition walls, electrochromic glazing, courtyard door lock/light integration as well as multi-lumen fixtures with a coherent dimming functionality. This is crucial for the project's success, as the majority of power is sourced from roof mounted solar panels.



Carefully selected fixtures' light distribution and fixtures' placement create an organic wall transformed into an integrated art formation aimed to create a relaxing ambiance.

DESIGN TEAM

Krzysztof Pajerski

AIA, CSI, CDT, LEED AP BD+C, dbHMS



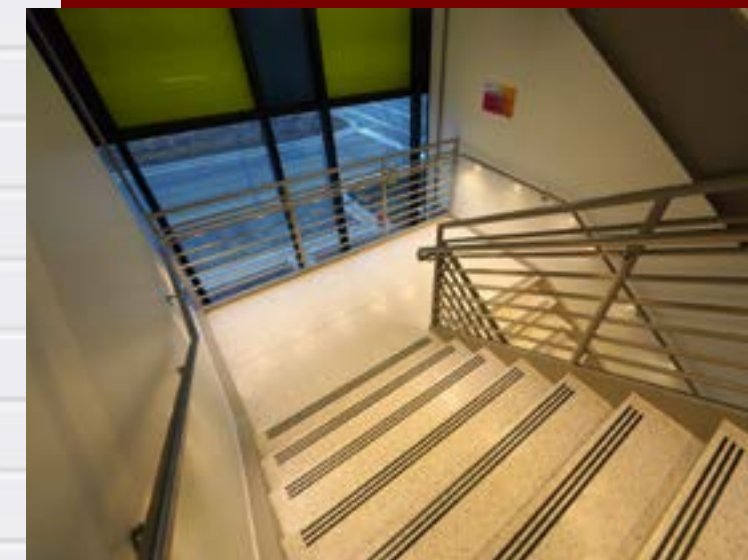
Discrete illumination emphasizes the architectural features, with the objective to imitate the soothing sparkling lake waves; thus, creating a quintessence for library focus.

Space programming and space activities were clearly delineated by utilizing unique lighting design solutions and fixture types, while providing a harmonious symbiotic space.



Aesthetically pleasing cluster of decorative fixtures is introduced as a welcoming element leading to the community room, while emphasizing the fluid flexibility of the space.

Site mock-ups combined with detailed AGI modeling resulted in the glare-free, uniform, six-story continuous stair illumination.



AWARD OF MERIT

University of Illinois – Health Hospital Welcome Atrium

The Hospital Welcome Atrium at the University of Illinois Hospital & Health Sciences System is a two-story, 17,000-square-foot lobby and registration area. The space is filled with natural light that creates a soothing and relaxing mood for potentially nervous visitors. The lighting design complements the tranquil environment by using indirect illumination that accentuates the airy and open feel of the area.

One main challenge was the need to design the lighting around the striking architectural feature used for the reflection room. The tight radius of the ellipse coves required varying fixture lengths and mockups to provide an even illumination along the curves. The smooth gradual light transition to the center not only illuminates the lounge area below, but also provides the soothing ambiance needed for the meditation area in the interior space above. For the registration area, the lighting fixtures draw visitor's attention for check-in, with lines of light pointing the way. Intentional wall scalloping highlights the destination. The lighting design not only met a very stringent energy code but exceeded it by 29%.



The elliptical cove's warm glow reinforces the notion that the striking architecture of the second floor contemplation space floats within the Atrium.

Light washes the walls, as a glowing cove and gathering of pendants highlight the calming elliptical architecture of the contemplation room.



Light scrapes gentle texture on ceiling and wall, elliptical pendants dance overhead, lines of light point the way, lighting ushers guests from entrance to reception.



Light emanates from an unseen cove issuing an invitation to the contemplation space, while subtle downlighting highlights the entrance.



DESIGN TEAM

Renata Pajerska, LC, CLD, LEED AP
BD+C, Primera Engineers

Ann Youngberg, LC, LEED AP
formerly with Primera Engineers

Deborah Steimel-Clair, PE, LC
formerly with Primera Engineers

AWARD OF MERIT

Optiver

The elevator lobby features a large-format luminous ceiling and luminous bands that flank elevator doors. Care was taken to integrate the lighting and architecture for a seamless, modern aesthetic. Lumen outputs and wattages were carefully studied to manage energy consumption and luminance, while ensuring uniform illumination and appropriate light levels.

The 2-story atrium is the primary hub for the new space. It hosts many activities, so dimming controls and layers of light help accommodate these needs. Luminous ceiling clouds extend into this space and accentuate the generous ceiling height. Adjustable cylinder downlights surround the clouds and provide illumination for the seating below. Theatrical spotlights are carefully placed between clouds to highlight presenter positions for company wide events.

The bar, servery, and dining areas incorporate accent lighting below the bar top, cylinder downlights for ambient light, track lighting at food counters, and decorative sconces and pendants to add a hospitality feel to the space.

The lighting power density is 0.75 W/FT, below the IECC 2021 allowance, an important achievement given their 24/7 operations. The new office for this firm successfully integrates architecture, lighting, technology, and hospitality into an inviting, invigorating space for staff and visitors alike.



Warm lighting complements and enhances the prominent architectural features. Light bounces off the floor onto the canopy above, drawing visitors into the main entry. Exterior lighting, mindful of reducing light pollution, ensures a safe and inviting outdoor environment. Strategic accents delicately highlight structural elements adding depth and visual interest.



Each distinct space is characterized by a unique lighting approach, while a serpentine curvable linear pendant winds through corridors servicing as a wayfinding queue.

Energy-efficient LED fixtures, chosen for their low energy consumption and long lifespan, paired with robust control systems, provide maximum energy savings for the client.



A large skylight above the geometric grand stair seamlessly integrates natural with artificial light. Warm CCT, small-aperture downlights recessed into warm-wood soffits supplement natural light.



DESIGN TEAM

Travis Shupe
Schuler Shook, Assoc. IALD

Emily Klingensmith
Schuler Shook, IALD, LC, LEED AP

John Jacobsen
Schuler Shook, Assoc. IALD, IES, LC



Community

WHY IES?

When you join the IES, you obtain access to a wealth of educational resources, publications, content, and standards to advance your professional knowledge. As a member, you are part of a peer-based community, and gain opportunities to build your professional network and enrich your leadership skills.

Networking

- EXCLUSIVE CONTENT & EDUCATION**
 - ✓ Unlimited Webinars
 - ✓ CEUs
 - ✓ LD+A Magazine
 - ✓ LEUKOS
 - ✓ New Standards
- LEADERSHIP & VOLUNTEERISM**
 - ✓ Society Support Committees
 - ✓ Technical Committees
 - ✓ Section Leadership and Committees
 - ✓ IES Board of Directors
 - ✓ Research Projects
- NETWORKING OPPORTUNITIES**
 - ✓ Local Section Membership
 - ✓ Global Membership Directory
 - ✓ In-Person Events
 - ✓ Virtual and Hybrid Events
- PREFERENTIAL PRICING**
 - ✓ Lighting Library Subscription
 - ✓ IES Society Level Events
 - ✓ LightFair
 - ✓ On-Demand CEUs
 - ✓ Educational Courses

Education

RENEW YOUR MEMBERSHIP TODAY



Thank you to all design teams who submitted this year. We look forward to celebrating your next great designs in 2025!



Seem Sweep™ 2
SWEEPING LINES OF LIGHT



A+M Presents

TIMELESS ELEGANCE

“ILLUMINATE THE SHADOWS,
UNVEIL THE SECRETS”

26 IES CHICAGO SECTION